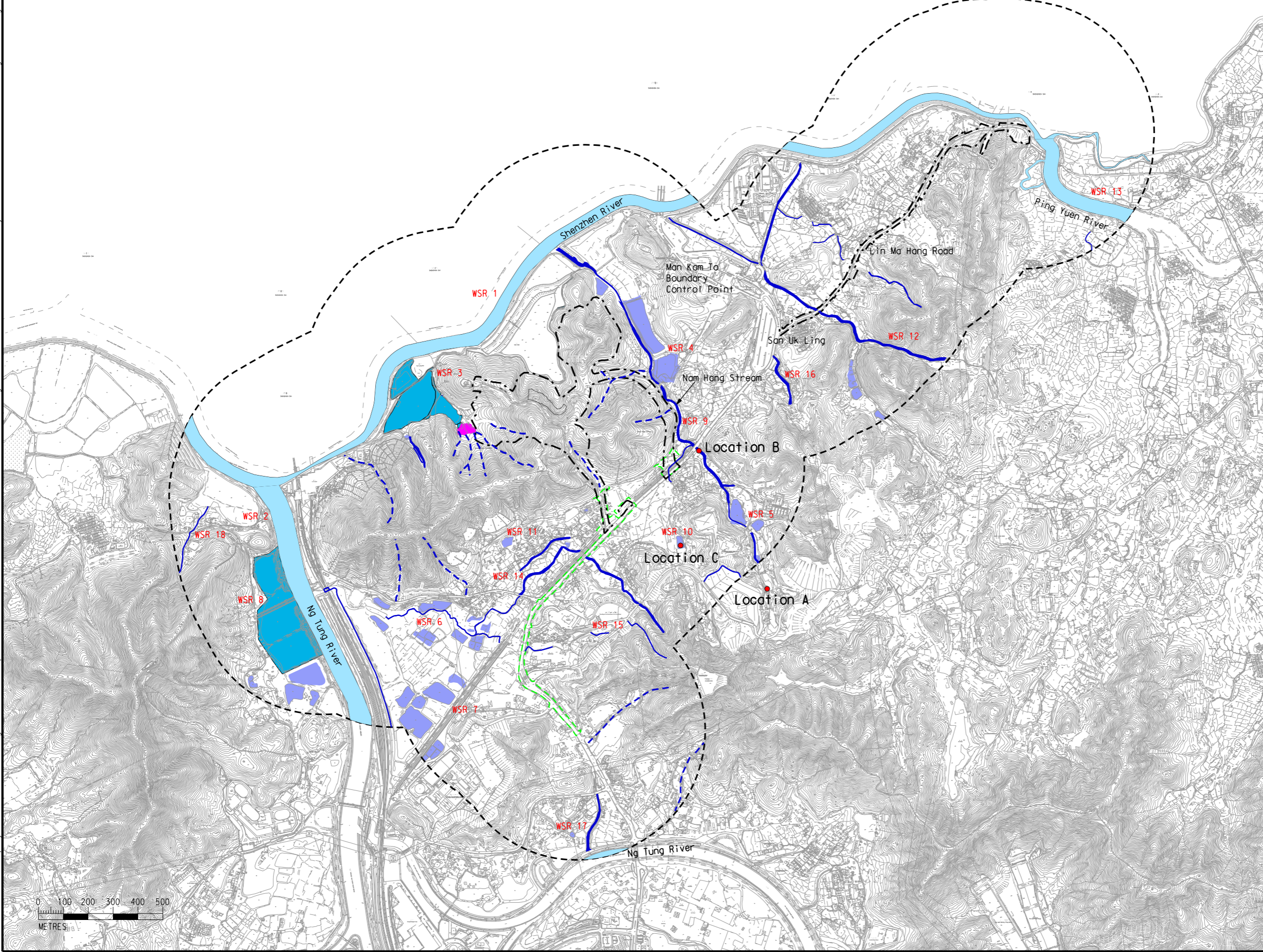




Legend

- Project Boundary
- Utilities Construction
- 500m Assessment Area
- Channelized River
- Pond
- Watercourse
- Conservation Area (CA)
- Wet Woodland
- Seasonal Watercourse
- Water Quality Monitoring Station from Previous EIA Study

Printed by : 2/29/2016
 Filename : G:\env\project\2314448\13 Drawing Deliverables\Reports\015 EIA\20160229 Revised Final EIA_v1\Ch 6 Water\Figure 6.2.2 - Locations of Water Quality Sensitive Receivers and Monitoring Stations.dgn



E	FIFTH ISSUE	GL	02/16
D	FOURTH ISSUE	GL	10/15
C	THIRD ISSUE	GL	02/15
B	SECOND ISSUE	GL	11/14
Rev	Description	By	Date

Consultant
ARUP

Contract No. and Title:
 Agreement No. CE 1/2013(CE)
 Site Formation and Associated
 Infrastructural Works for Development
 of Columbarium, Crematorium and
 Related Facilities at Sandy Ridge
 Cemetery - Design and Construction

Drawing title
**Locations of Water Quality
 Sensitive Receivers and
 Monitoring Stations
 from Previous EIA Study**

Drawing no. Figure 6.2.2		Rev. E	
Drawn GL	Date 02/16	Checked EL	Approved ST
Scale AS SHOWN		Status PRELIMINARY	

COPYRIGHT RESERVED

土木工程拓展署
 Civil Engineering and
 Development Department